

## DRAMIŃSKI GMDM (type WZW-2)



### Technical data:

<b>Weight:</b>	1490 g
<b>Dimensions:</b>	l. 19.5 cm, w. 16.0 cm, h. 12.5 cm
<b>Display:</b>	LCD, alphanumeric 2 x 16 digits
<b>Power supply:</b>	built-in Ni-Cd battery packs with capacity of 1000 mAh
<b>Approximate time of continuous operation with full charge</b>	about 45 hours
<b>Low battery charge indicator:</b>	automatic
<b>Chamber filling method:</b>	semi-automatic using dosage tube with slider
<b>Moisture measurement method:</b>	volume-weight
<b>Measurement resolution:</b>	temperature – 1 °C, humidity – 0.1 %
<b>Temperature compensation:</b>	automatic

### Grain moisture and density meter with a built-in scale

- ideally suited for use by companies dealing with grain processing
- the highest accuracy of measurement (less than 0.5% for normalized grain) due to special scale system
- easy to use
- device with functions:
  - moisture measurement (%)
  - density measurement in bulk (kg/hl)
  - temperature measurement (°C)
- **programmed for the following grain types:**
  - Canola 4.0% – 20.0%
  - Rye 9.0% – 24.0%
  - Common wheat 9.0% – 24.0%
  - Quality wheat 9.0% – 24.0%
  - Triticale 9.0% – 24.0%
  - Spring barley 9.0% – 24.0%
  - Oat 9.0% – 24.0%
  - Corn 9.0% – 24.0%

You can upload additional calibration. Check: [draminski.com](http://draminski.com)



clear display with functional keyboard



precise semi-automatic dosage tube



set in carrying case

## DRAMIŃSKI HMM



### Technical data:

<b>Weight:</b>	800 g (with probe on cable), 665 g (with fixed probe)
<b>Probe length:</b>	56 cm (probe on cable), 54 cm (fixed probe)
<b>Length of connecting cable:</b>	140 cm
<b>Power supply:</b>	one battery 9V, type 6F-22
<b>Approximate time of continuous operation on 1 battery:</b>	about 100 hours
<b>Low battery charge indicator:</b>	automatic
<b>Display:</b>	LCD; 3.5 digits
<b>Method of moisture measuring:</b>	by impedance
<b>Moisture measurement range:</b>	10 – 80 %
<b>Temperature measurement range:</b>	1 – 100 °C (33.8 – 212.0 °F)



### Moisture tester for hay and pressed straw

- precise moisture measurement for hay and straw in bales and cubes
- precise temperature measurement
- reading of average, minimum and maximum moisture values of tested hay or straw bale based on 50 recorded measurements
- used successfully by customers to measure the humidity of materials for the production of biomass, pellet, tobacco, hops in bags
- essential for crops storage
- very durable
- energy saving
- the possibility of self-modification results
- choose calibration curve depending on the pressing force



special grip for easy insertion of probe into heavily compressed material



intuitive display with functional keyboard

## DRAMIŃSKI TwistGrain



Scale 1:1

### Grain moisture meter with grain compression

- precise and fast measurement - average measurement accurateness is  $\pm 0.5\%$  for normalized grain
- the possibility of self-modification results
- possibility to add new grain species to the list by the user
- displays average result from 3 last measurements
- intuitive menu in several language versions
- **grain type and measuring range:**

– Black pepper 4.0% – 25.0%	– Mung beans 8.5% – 20.0%
– Blue lupine 7.0% – 30.0%	– Oat 9.0% – 30.0%
– Buckwheat 10.0% – 30.0%	– Pea 10.0% – 17.0%
– Canola 4.5% – 25.0%	– Peanuts 3.0% – 20.0%
– Chickpeas 8.0% – 20.0%	– Red beans 8.0% – 22.0%
– Cocoa 6.0% – 20.0%	– Rice brown 8.5% – 25.0%
– Common wheat 9.0% – 30.0%	– Rice paddy 8.5% – 33.0%
– Corn 9.0% – 25.0%	– Rye 9.0% – 30.0%
– Corn 25.0% – 40.0%	– Soya 7.0% – 25.0%
– Variety wheat 9.0% – 30.0%	– Sorghum 6.5% – 29.0%
– Green Coffee Arabica 8.0% – 30.0%	– Spring barley 9.0% – 30.0%
– Green Coffee Robusta 8.0% – 30.0%	– Sunflower seeds unshelled 5.0% – 27.0%
– Horse bean 8.0% – 30.0%	– Triticale 9.0% – 30.0%
– Millet 4.0% – 18.0%	– White rice 8.0% – 25.0%

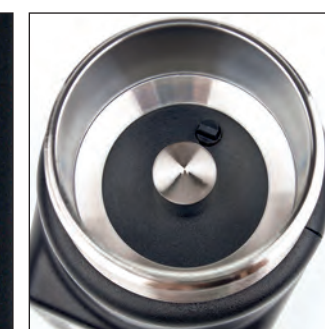
It is possible to extend the list of grain species before purchase. If you are interested, please, contact us.

### Technical data:

<b>Weight:</b>	500 g
<b>Dimensions:</b>	16.5 cm x 7.0 cm x 7.5 cm
<b>Display:</b>	LCD, graphic LED
<b>Power supply:</b>	4 alkaline batteries type AA, 1.5 V and 1 battery type CR2032, 3 V
<b>Approximate time of continuous operation on 1 set of batteries:</b>	about 29 hours
<b>Low battery charge indicator:</b>	automatic
<b>Chamber filling method:</b>	manual
<b>Moisture measurement method:</b>	by impedance
<b>Measurement resolution:</b>	temperature – 1 °C, humidity – 0.1 %
<b>Temperature compensation:</b>	automatic



backlit display with adjustable brightness and backlight time



precise measurement chamber with temperature sensor



screw cap with buzzer



transport bag with strap



## DRAMIŃSKI GMM mini



3 YEARS WARRANTY

### Grain moisture meter

- quick moisture and temperature measurement ( $\pm 1\%$  for normalized grain)
- large number of calibrations (33 types), with modification by user
- battery powered
- easy to use

#### • grain types and measurement ranges:

– Bean 5.0% – 35.0%	– Husked sunflower seeds 6.0% – 25.0%	– Rye 8.0% – 35.0%
– Blue lupine 5.0% – 35.0%	– Maize 30.0% – 43.0%	– Sorghum 5% – 35.0%
– Brown rice 8.0% – 23.8%	– Maize 8.0% – 30.0%	– Soya 7.5% – 30.0%
– Canola 4.0% – 30.0%	– Millet 4.0% – 18.6%	– Spring barley 9.2% – 36.2%
– Chickpeas 5.0% – 35.0%	– Mustard 5.0% – 35.0%	– Sunflower seeds 5.0% – 35.0%
– Common wheat 7.2% – 35.0%	– Oats 5.0% – 35.0%	– Triticale 7.4% – 35.0%
– Field peas 7.8% – 35.0%	– Paddy rice 8.0% – 35.0%	– Variety wheat 7.3% – 35.0%
– Flax seeds 5.4% – 20.5%	– Parchment coffee Arabica 12.0% – 38.0%	– White clover 4.8% – 35.0%
– Green Coffee Arabica 5.5% – 40.0%	– Pea 8.0% – 33.0%	– White rice 5.0% – 35.0%
– Green Coffee Robusta 6.0% – 40.0%	– Perennial ryegrass 6.4% – 22.0%	– Yellow lupine 5.0% – 35.0%
– Horse bean 7.9% – 35.0%	– Red clover 5.0% – 35.0%	

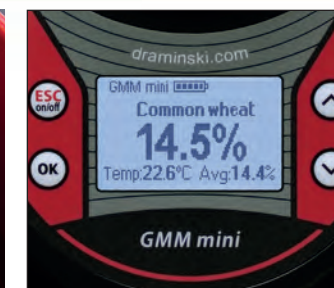
You can upload additional calibration. Check: [draminski.com](http://draminski.com)

#### Technical data:

<b>Unit weight:</b>	700 g (including batteries)
<b>Dimensions:</b>	19.0 x 12.5 x 8.0 cm
<b>Display:</b>	graphic LCD, LED back lit, diagonal 2"
<b>Power supply:</b>	2 x battery AA 1.5V (LR6)
<b>Estimated working time on one battery pack:</b>	151 hours if back lit is 0% 70 hours if back lit is 30%
<b>Battery low indication:</b>	automatic signal
<b>Sample loading:</b>	manual, with the help of a special dispenser
<b>Moisture measurement method:</b>	capacitive
<b>Measurement resolution:</b>	temperature – 0.1°C, humidity – 0.1%
<b>Temperature compensation:</b>	automatic
<b>Range of temperature measurement:</b>	from -10°C to +85°C



robust measurement chamber with temperature sensor



clear display with functional keyboard



special dosage tube with slider

## DRAMIŃSKI GMMpro



3 YEARS WARRANTY

### Grain moisture meter with built-in scale

- recommended for demanding clients and producers of grain and canola
- for companies purchasing and storing grains
- for companies producing fodder from purchased grains
- built-in scale system increasing the measuring accuracy ( $\pm 0.5\%$  for normalized grain)
- battery powered

#### • grain types and measurement ranges:

– Canola 4.0 % – 20.0 %	– Spring barley 9.0 % – 24.0 %
– Rye 9.0 % – 24.0 %	– Triticale 9.0 % – 24.0 %
– Durum wheat 9.0 % – 24.0 %	– Corn 9.0 % – 24.0 %
– Common wheat 9.0 % – 24.0 %	– Oat 9.0 % – 24.0 %

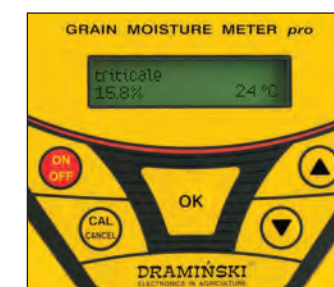
You can upload additional calibration. Check: [draminski.com](http://draminski.com)

#### Technical data:

<b>Weight:</b>	1595 g
<b>Dimensions:</b>	l. 25.0 cm, w. 16.0 cm, h. 12.2 cm
<b>Display:</b>	LCD, alphanumeric 2 x 16 characters
<b>Power supply:</b>	one alkaline battery 9V, type: 6LF-22
<b>Approximate time of continuous operation on 1 battery:</b>	about 28 hours
<b>Low battery charge indicator:</b>	automatic
<b>Chamber filling method:</b>	manual, using dosage tube with slider
<b>Moisture measurement method:</b>	volume-weight
<b>Measurement resolution:</b>	temperature – 1 °C, humidity – 0.1 %
<b>Temperature compensation:</b>	automatic



set in carrying case



clear display with functional keyboard



special semi-automatic dosage tube

## DRAMIŃSKI GMS



3 YEARS WARRANTY

### Grain moisture meter with grain sample grinder DRAMIŃSKI Grain Master (GMS)

- precise moisture measurement ( $\pm 0.5\%$  for standard grain)
- back-lit display
- quick data and software update – USB connection
- modify results
- set the number of measurements to give an average
- recommended by big grain producers, grain drying companies and grain purchase points
- cereal species and moisture ranges:

– Pea 9.5% – 23.0%	– Common wheat 10.0% – 27.0%
– Spring barley 10.0% – 25.0%	– Triticale 11.0% – 26.0%
– Cannabis sativa 4.4% – 15.0%	– Paddy rice 8.0% – 32.5%
– Maize 10.0% – 30.0%	– Canola 4.9% – 20.0%
– Maize 30.0% – 45.0%	– Soya 5.0% – 40.0%
– Blue lupine 10.0% – 28.0%	– Vetch 7.0% – 20.0%
– Oats 10.1% – 25.0%	– Rye 10.5% – 29.0%
– Millet 8.0% – 15.0%	– Rice white 8.0% – 20.0%
– Variety wheat 10.0% – 24.5%	– Rice brown 7.0% – 20.0%

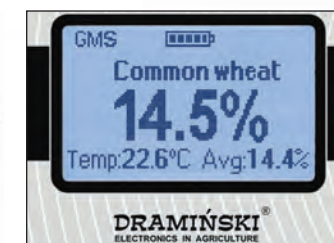
You can upload additional calibration. Check: [draminski.com](http://draminski.com)

#### Technical data:

<b>Weight:</b>	1015 g (with the knob and the battery)
<b>Dimensions:</b>	l. 21.0 cm, w. 10.0 cm, h. 7.5 cm
<b>Display:</b>	graphic LCD, LED back lit, diagonal 2"
<b>Power supply:</b>	1 battery 6LF-22, 9 V
<b>Estimated working time on one battery pack:</b>	53 hours if backlit is 0% 35 hours if backlit is 30%
<b>Battery low indication:</b>	graphic
<b>Sample loading:</b>	manual with the use of a special dispenser
<b>Moisture measurement method:</b>	resistance method
<b>Temperature compensation:</b>	is regarded automatically



robust measurement chamber with temperature sensor and grinding discs made from galvanized hardened tool steel



clear display



convenient key, rattle-type